



Quality improvement approaches in Scottish education



For Scotland's learners, with Scotland's educators
Do luchd-ionnsachaidh na h-Alba, le luchd-foghlaim Alba

National Improvement Framework 2024

The 'Vision for education in Scotland'

- Excellence through raising attainment and improving outcomes: ensuring that every child and young person achieves the highest standards in literacy and numeracy, as well as the knowledge and skills necessary to shape their future as successful learners, confident individuals, responsible citizens, and effective contributors;
- Achieving equity: ensuring every child and young person has the same opportunity to succeed, no matter their background or shared protected characteristics, with a particular focus on closing the poverty related attainment gap.

[Education: National Improvement Framework and improvement plan 2024 - gov.scot \(www.gov.scot\)](https://www.gov.scot/publications/nif-2024-2026/pages/1-1-introduction.aspx)

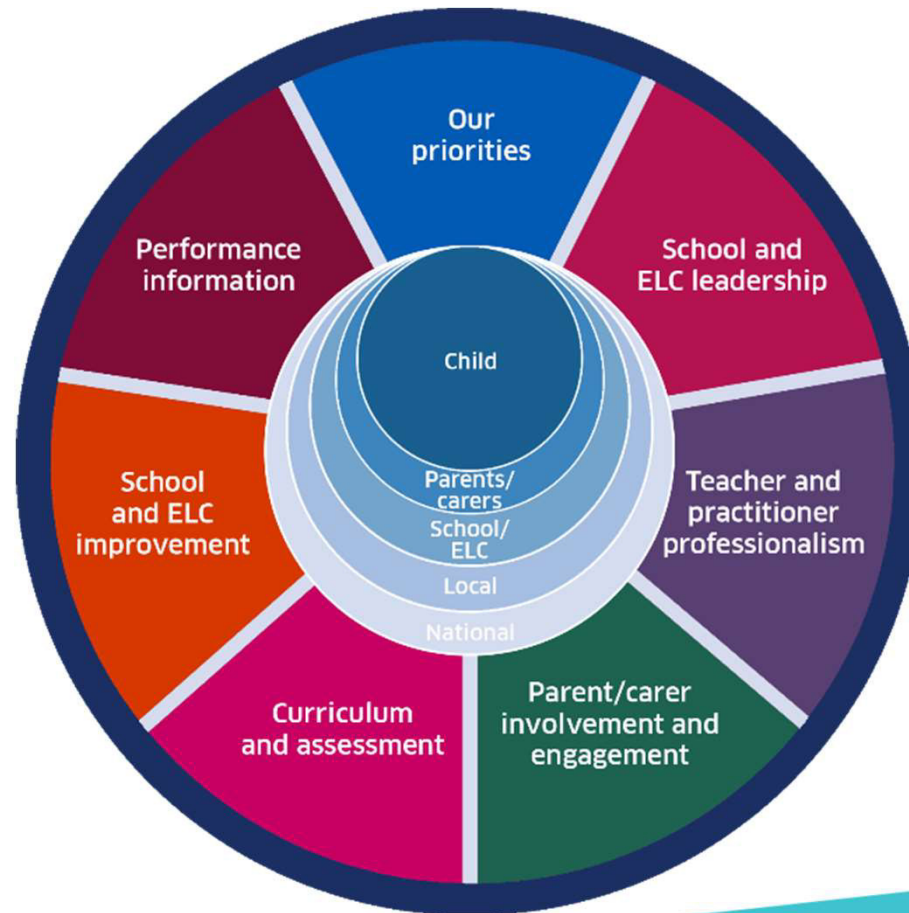
For Scotland's learners, with Scotland's educators
Do luchd-ionnsachaidh na h-Alba, le luchd-foghlaim Alba

National Improvement Framework 2024

The 'Key Priorities for the NIF'

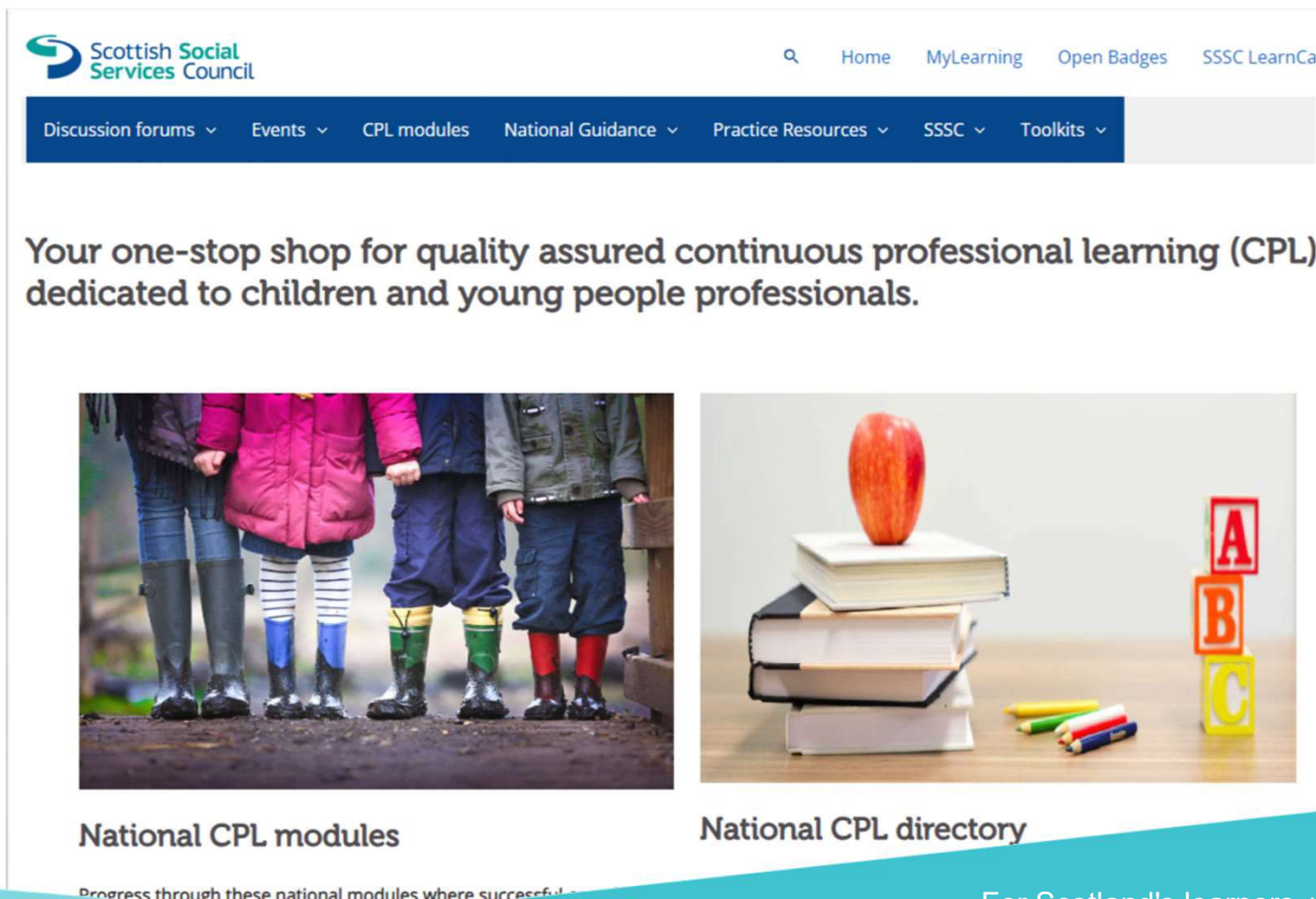
- Placing the human rights and needs of every child and young person at the centre of education
- Improvement in children and young people's health and wellbeing
- Closing the attainment gap between the most and least disadvantaged children and young people
- Improvement in skills and sustained, positive school-leaver destinations for all young people
- Improvement in attainment, particularly in literacy and numeracy.

National Improvement Framework (NIF)



For Scotland's learners, with Scotland's educators
Do luchd-ionnsachaidh na h-Alba, le luchd-foghlaim Alba

Online Resources



The screenshot shows the top of the Scottish Social Services Council website. The header includes the council's logo and name on the left, and a search icon followed by navigation links for Home, MyLearning, Open Badges, and SSSC LearnCa on the right. Below this is a dark blue navigation bar with dropdown menus for Discussion forums, Events, CPL modules, National Guidance, Practice Resources, SSSC, and Toolkits. The main content area features the heading: "Your one-stop shop for quality assured continuous professional learning (CPL) dedicated to children and young people professionals." Below the heading are two images: one of children in rain gear and another of school supplies like books, an apple, and alphabet blocks.

Scottish Social Services Council Home MyLearning Open Badges SSSC LearnCa

Discussion forums ▾ Events ▾ CPL modules National Guidance ▾ Practice Resources ▾ SSSC ▾ Toolkits ▾

Your one-stop shop for quality assured continuous professional learning (CPL) dedicated to children and young people professionals.

National CPL modules

Progress through these national modules where successful

National CPL directory

For Scotland's learners, with Scotland's educators
Do luchd-ionnsachaidh na h-Alba, le luchd-foghlaim Alba

Online Resources



[Home](#) > [Resources](#) > A summary of Early Learning and Childcare (ELC) resources

A summary of Early Learning and Childcare (ELC) resources

Published 06/03/2019. Last updated 08/01/2024

Practice exemplars Early Learning and Childcare (ELC) Gaelic

[Realising the Ambition](#) (2020) is the national practice guidance for early years in Scotland. It builds upon the original principles and philosophy of pre-birth to three and Building the Ambition. It covers children's learning and development from birth into the early years of primary school.

How to use this page to improve practice?

Please consider the following reflective

What is this?

This page provides a summary of key information, policy, resources, and exemplification relating to early learning and childcare (ELC).

Who is this for?

This page aims to

For Scotland's learners, with Scotland's educators
Do luchd-ionnsachaidh na h-Alba, le luchd-foghlaim Alba

ES ELC National Support



For example:

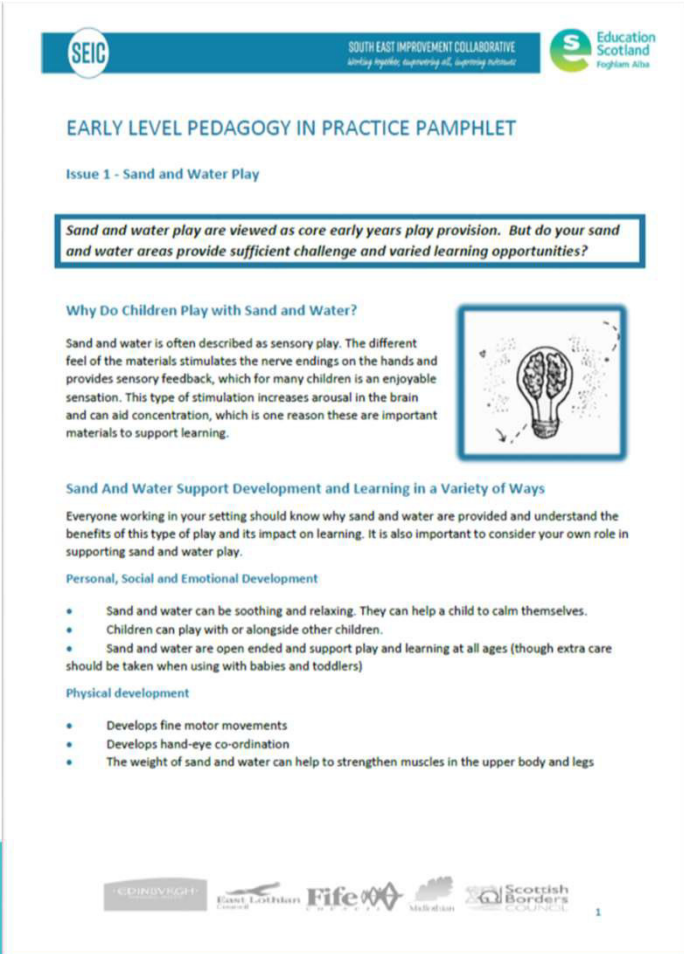
- Pondering Pedagogy (online for practitioners)
- Pedagogical Leadership (in-person)
- Equity and Excellence Leads National Network

For Scotland's learners, with Scotland's educators
Do luchd-ionnsachaidh na h-Alba, le luchd-foghlaim Alba

ES Regional Support for early years (0-8) education

For example:

- Collaborating on 'Play Pedagogy in Primary 1' professional learning programmes
- Collaborating on a range of leaflets to support curriculum and pedagogy in ELC
- Collaborating on ELC leadership programmes



SEIC SOUTH EAST IMPROVEMENT COLLABORATIVE
Sharing expertise. Supporting all. Inspiring children.

Education Scotland
Foghlam Alba

EARLY LEVEL PEDAGOGY IN PRACTICE PAMPHLET

Issue 1 - Sand and Water Play

Sand and water play are viewed as core early years play provision. But do your sand and water areas provide sufficient challenge and varied learning opportunities?

Why Do Children Play with Sand and Water?

Sand and water is often described as sensory play. The different feel of the materials stimulates the nerve endings on the hands and provides sensory feedback, which for many children is an enjoyable sensation. This type of stimulation increases arousal in the brain and can aid concentration, which is one reason these are important materials to support learning.

Sand And Water Support Development and Learning in a Variety of Ways

Everyone working in your setting should know why sand and water are provided and understand the benefits of this type of play and its impact on learning. It is also important to consider your own role in supporting sand and water play.

Personal, Social and Emotional Development

- Sand and water can be soothing and relaxing. They can help a child to calm themselves.
- Children can play with or alongside other children.
- Sand and water are open ended and support play and learning at all ages (though extra care should be taken when using with babies and toddlers)

Physical development

- Develops fine motor movements
- Develops hand-eye co-ordination
- The weight of sand and water can help to strengthen muscles in the upper body and legs

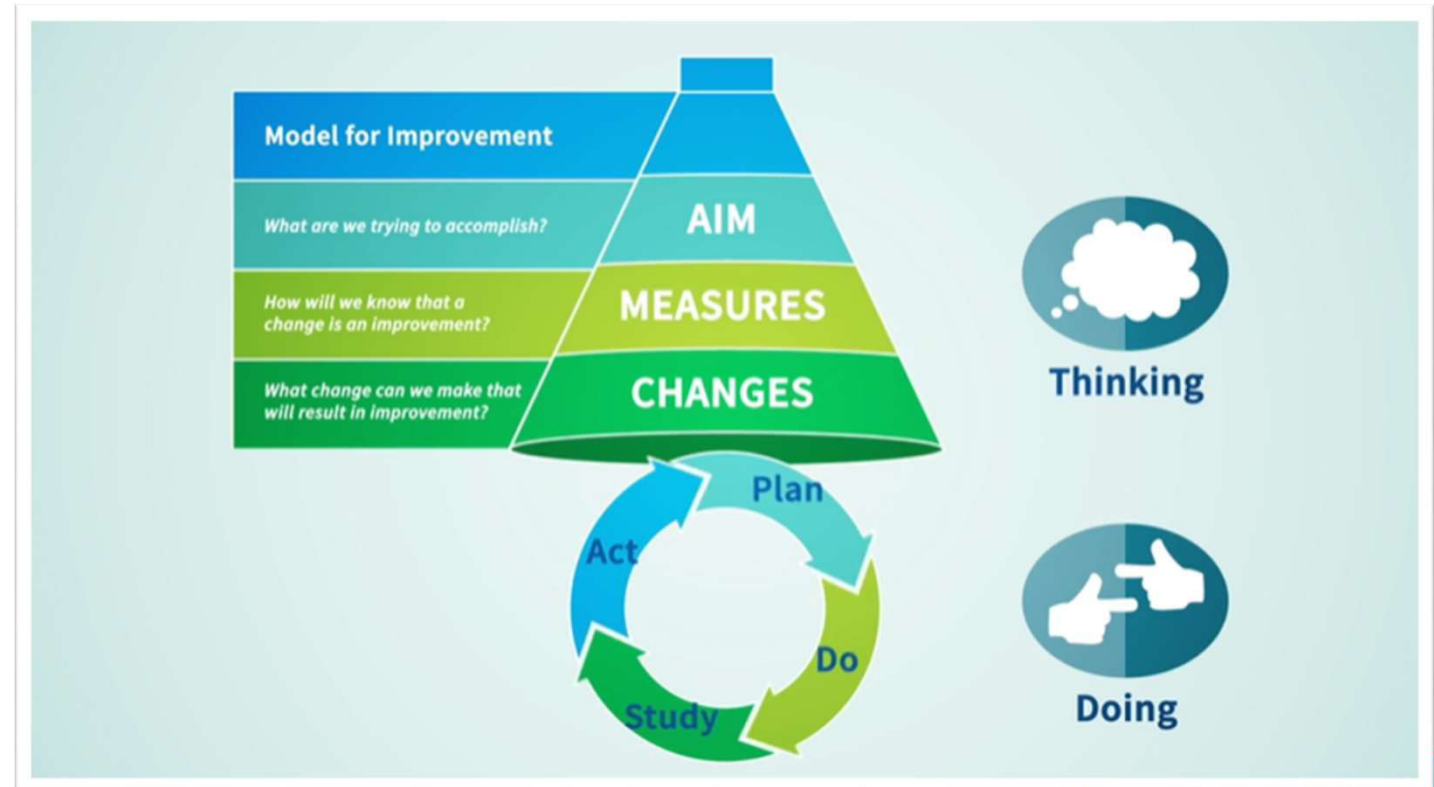
GLASGOW **East Lothian** **Fife** **Midlothian** **Scottish Borders COUNCIL**

1

Children and Young People's Collaborative (CYPIC)

Quality Improvement journey

cypic.co.uk/



For Scotland's learners, with Scotland's educators
Do luchd-ionnsachaidh na h-Alba, le luchd-foghlaim Alba

Local Authority Support - Collaborative Improvement

Collaborative Improvement is an approach to bringing about improvement through shared work involving staff from the Local Authority, Education Scotland and the Association of Directors of Education in Scotland (ADES).

Together, the group establishes the focus for the Collaborative Improvement Review and then undertakes activities in the Local Authority that will result in an evaluative summary, identifying strengths and areas that may require further focus.

All 32 Local Authorities in Scotland will participate during the period 2021- 2024.



For Scotland's learners, with Scotland's educators
Do luchd-ionnsachaidh na h-Alba, le luchd-foghlaim Alba



Education Scotland

Denholm House
Almondvale Business Park
Almondvale Way
Livingston EH54 6GA

T +44 (0)131 244 5000

E enquiries@educationscotland.gsi.gov.uk

Foghlam Alba

Taigh Denholm
Pàirc Gnothachais Almondvale
Slighe Almondvale
Baile Dhunlèibhe EH54 6GA

T +44 (0)131 244 5000

E enquiries@educationscotland.gsi.gov.uk

For Scotland's learners, with Scotland's educators
Do luchd-ionnsachaidh na h-Alba, le luchd-foghlaim Alba